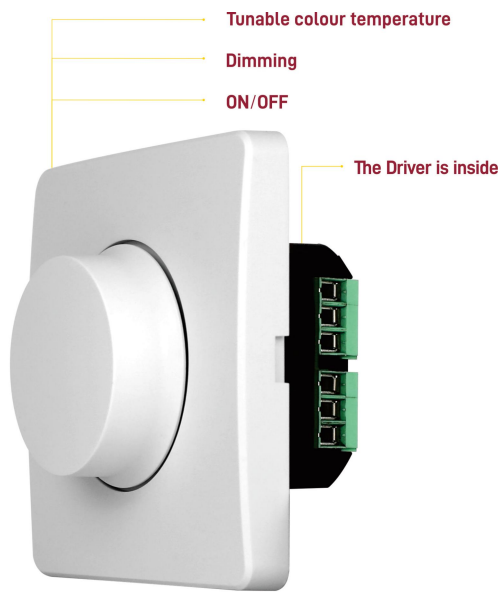


## SDD-EU-DIM series

Whole Family: SDD-EUxxxx-DIM   DC- (12V / 24V / 48V)   [ 60W 100W ]



RoHS



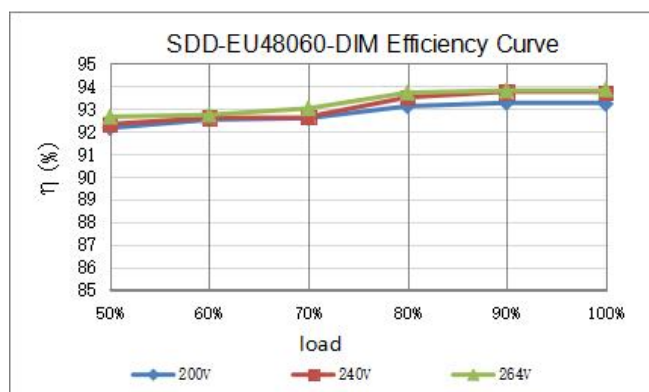
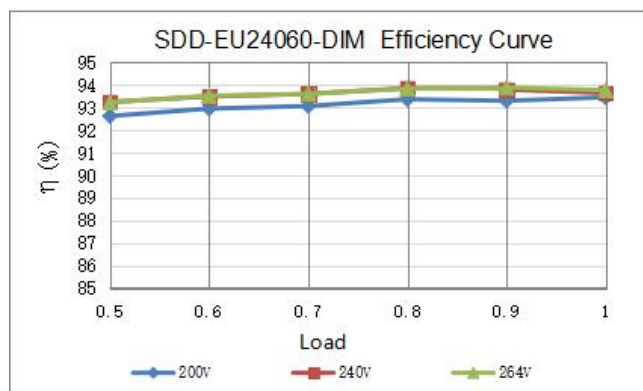
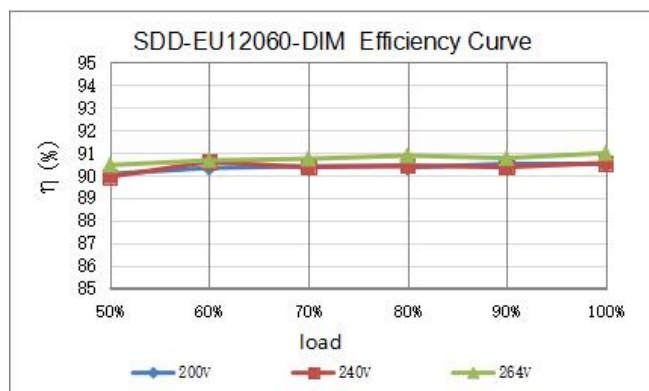
### Features

Output:	Constant Voltage
Input Range:	200-240VAC
PFC design:	Built-in active PFC function
Protections:	Short circuit/ Over load/ Over temperature
Heat dissipation:	Cooling by free air convection
Waterproof performance:	IP20
Design features:	1) Fine-tune output voltage can be adjusted slightly 2) Preset dimmer with knob encoder 3) Press standby function
Dimming range:	0.5%-100%
Application:	Suitable for the application of LED lighting
Warranty:	5 years warranty
Others:	16KHZ PWM output with dimming curve is a gamma 2.2 curve   Flicker-free

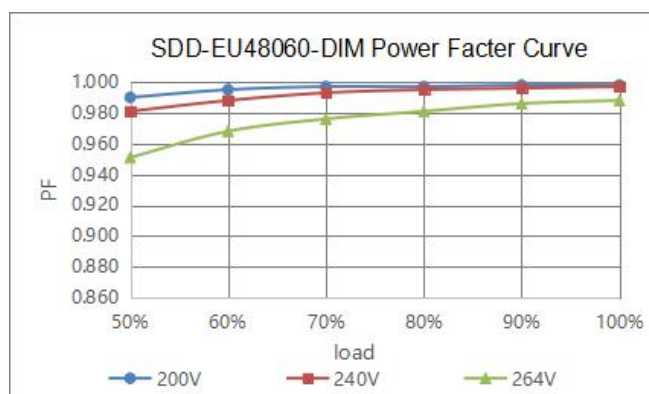
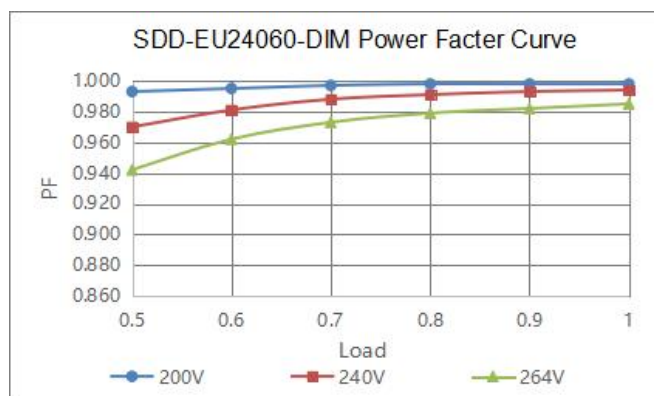
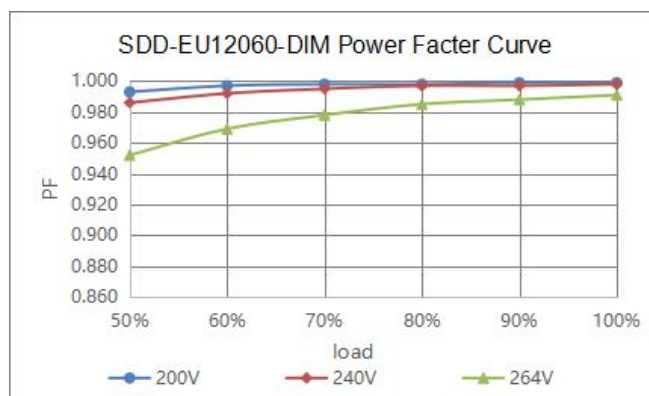
## Specification

Model		SDD-EU12060-DIM		SDD-EU24060-DIM		SDD-EU48060-DIM	
Certificate		SELV / CE / ENEC / RoHS / REACH					
Output	DC Rate Voltage	12V (12V-13.5V adjust by knob)		24V (24V-26V adjust by knob)		48V (48V-50V adjust by knob)	
	Voltage Tolerance	±0.5V					
	Load Regulation	≤1%					
	Line Regulation	≤0.5%					
	Rated current	5A		2.5A		1.25A	
	Rated power	60W					
Input	Voltage Range	200-240VAC					
	Frequency Range	47 - 63Hz					
	Power Factor @ full load	≥0.95					
	THD(Typ.) @ full load	≤20%					
	Efficiency @ full load	90.0%		92.0%		93.0%	
	AC Current (Max.)	0.35A					
	Inrush Current (Typ.)	50A, 150us@50%Ipeak					
	Leakage current	<0.5mA					
Protection	Short Circuit	Hiccup mode, recovers automatically after fault condition is removed					
	Over Load	≥110% Constant current mode, recovers automatically after fault condition is removed					
	Over temperature	Shell surface temperature 100℃±10℃ shut down o/p voltage, automatically recover after cooling					
Environment	Working TEMP.	-40~+50℃ (see below derating curve)					
	Working Humidity	20 - 95%RH    non-condensing					
	Storage TEM.,Humidity	-40 - +80℃,10 - 95% RH non-condensing					
	TEMP.coefficient	±0.03%/℃(0 - 50℃)					
	Vibration	10~500Hz, 2G 12min./1 cycle, period for 72 min. each along X,Y,Z axes					
Safety & EMC	Safety standards	EN61347-1    EN61347-2-13    (EU)					
	Withstand voltage	I/P-O/P:3.75KVAC    I/P-FG:1.88KVAC    O/P-FG:0.5KVAC (EU)					
	Isolation resistance	I/P-O/P:100M Ω / 500VDC / 25℃ / 70% RH					
	EMC Emission	EN55015    EN61000-3-2,3 (≥50%load)    (EU)					
Others	Net Weight	0.25KG					
	Dimension	86*86*55.4mm /    3.386"x3.386"x2.186" (Inch)					
	Packing						
Notes	1.    All parameters NOT specially mentioned are measured at 240VAC input, rated load and 25℃of ambient temperature. 2.    Tolerance: includes set up tolerance and load regulation .						

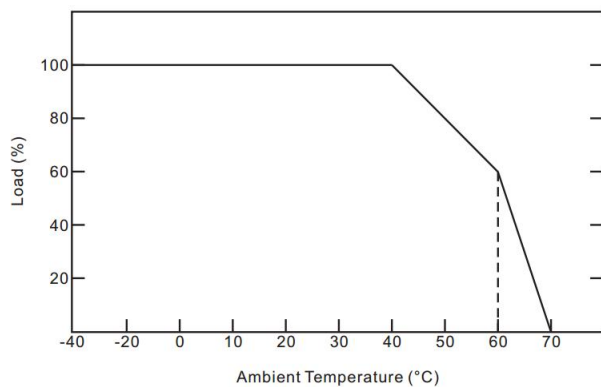
## Efficiency Curve (efficiency vs output load)



## Power factor curve

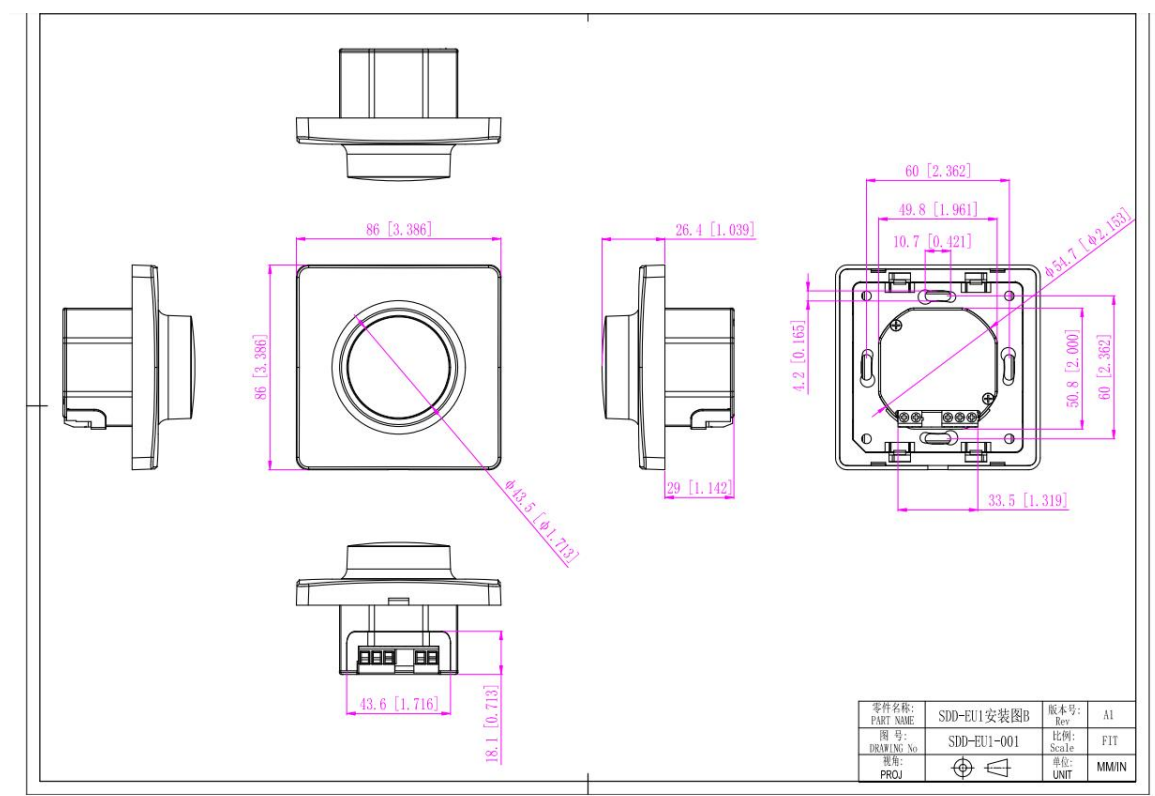


## Derating Curve (Output power VS Ambient TEMP)



- To extend their life, please refer to the Derating Curve and derate according to the temperature.
  - The output current of the dimmer should be selected according to the rated current of the lamp and the ambient temperature.
- Normally, we recommend the dimmer to reserve a certain amount of load to extend dimmer's life .

## Mechanical Specification

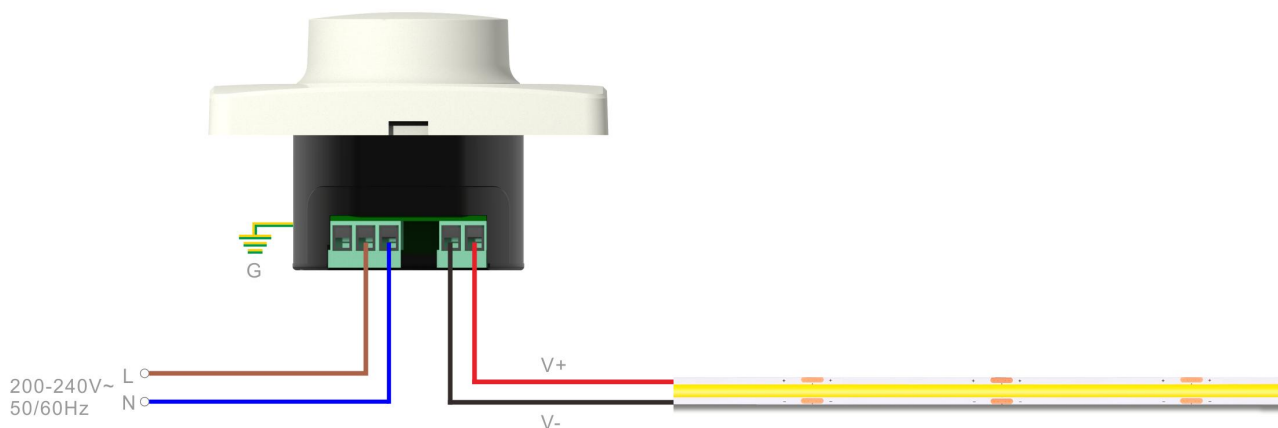


### Warm tips:

- Any other requests, we can customize.
- Please ensure that the connection is correct.

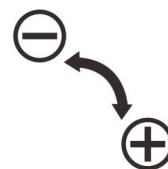
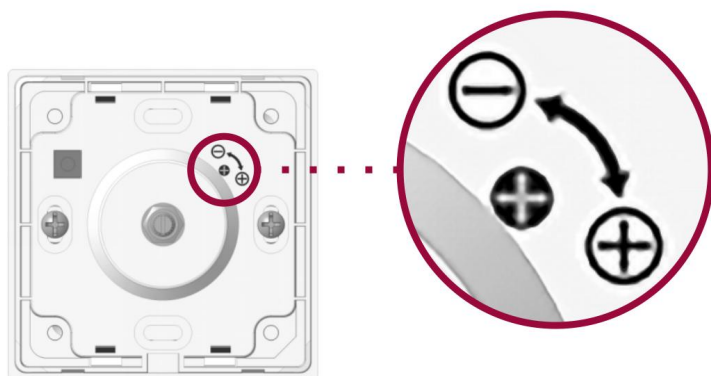
## Connecting Diagram

SDD-EU-DIM model for standard dimming system



## Knob to adjust the voltage

Clockwise rotation of the high voltage



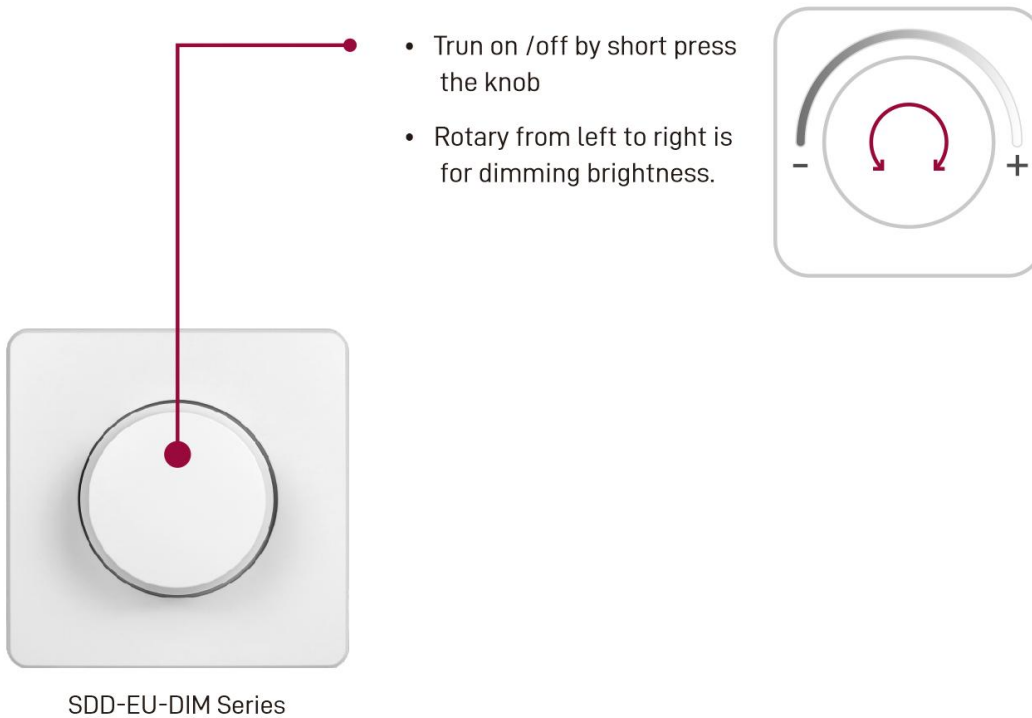
## Output Volt. Adjustment

12V output volt. : 12-13.5V

24V output volt. : 24-26V

48V output volt. : 48-50V

## Dimming and Operation



## Instructions

1. This driver+dimmer 2 in 1 should be installed by qualified and professional person.
2. Please make sure the driver+dimmer 2 in 1 is installed with adequate ventilation around it to allow for heat dissipation.
3. Ensure that connection is correct to avoid LED light or driver+dimmer 2 in 1 be damaged.
4. If the driver+dimmer 2 in 1 cannot work normally, don't maintain privately.

Have any questions, please contact with SCPOWER/SURETRON.

Please visit our website or contact us for more information! [www.scpower.net.cn/en](http://www.scpower.net.cn/en).